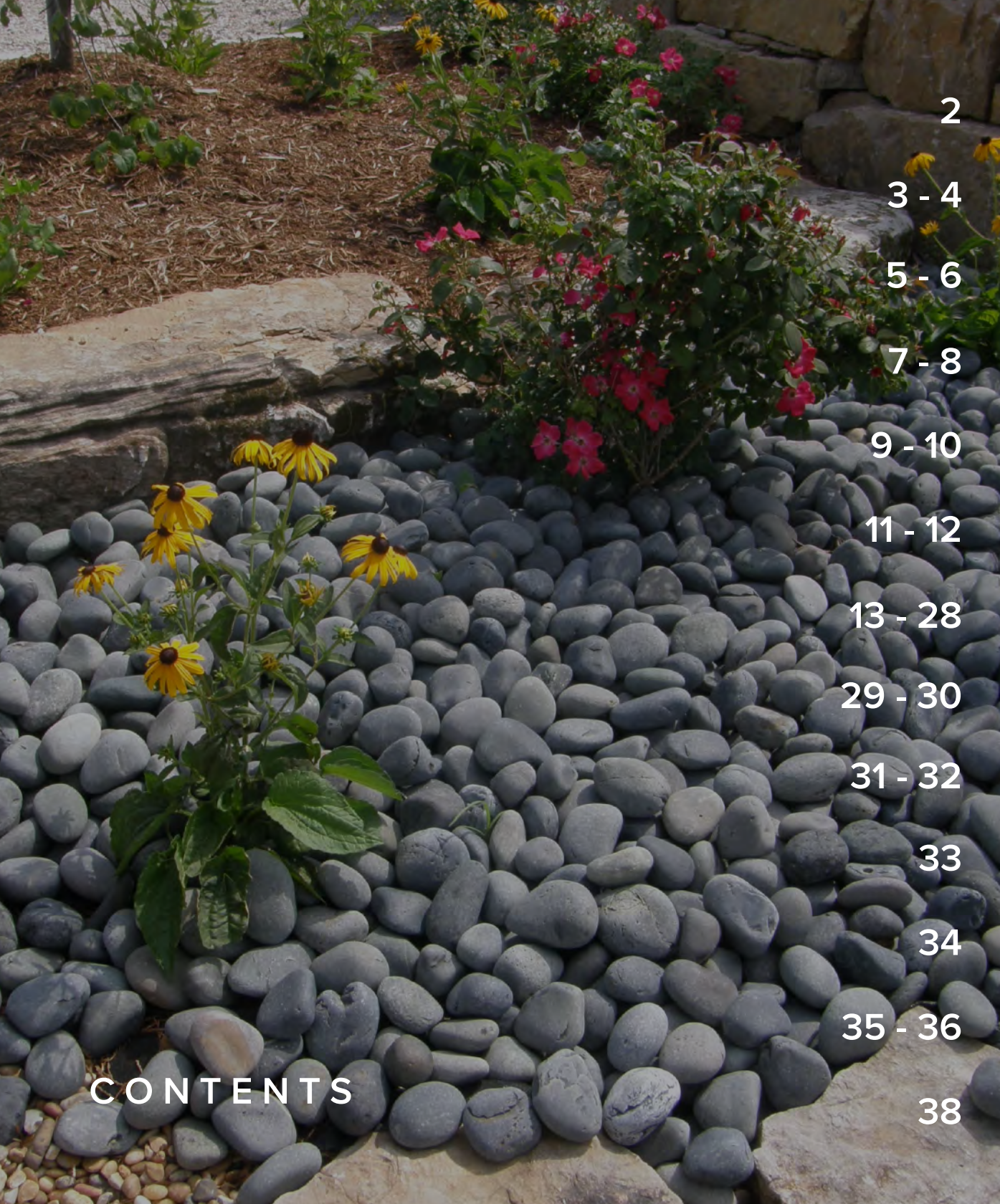




landscaping guide



# CONTENTS

2	history
3 - 4	gabouri
5 - 6	ew gold
7 - 8	pewter mist
9 - 10	meridian red
11 - 12	cobalt black
13 - 28	products
29 - 30	custom paving
31 - 32	regency wall
33	visual studio
34	website & app
35 - 36	easygrout
38	measurements

## OUR HISTORY

Earthworks, Inc. is a family owned business established in 1995 by Kevin Thieret, with a dream of changing and enhancing the customer stone buying experience. His passion is still alive and well today as it was back then. Kevin and his son, Aaron, work side by side everyday with the over 130 employees to ensure that their vision is seen and heard by all.

In 1997, Earthworks opened their first of 7 quarries located throughout the midwest, as well as a state-of-the-art manufacturing facility located in Ste. Genevieve, MO. This father and son team continues to put back into the company with several expansion efforts that allow Earthworks to provide its customers with everything from raw quarried blocks, to finished dimensional cut stones, all types of landscaping materials, as well as high quality stone veneers for both residential and commercial projects nationwide.

Earthworks has several hundred distribution partners throughout the United States and Canada. The size of our operation allows us to take part in both large and small projects including residential and commercial projects, historical restoration efforts, as well as all sizes of landscaping design projects.

Our vision has always been to REINVENT the standards of the entire industry, REIMAGINE the limitlessness of tomorrow's possibilities, and FOCUS our efforts on exceeding every customer's expectations.





Grey and buff colors. Gabouri is a limestone with marble characteristics. It is very dense with a low absorption rate which allows it to be perfect for all applications.



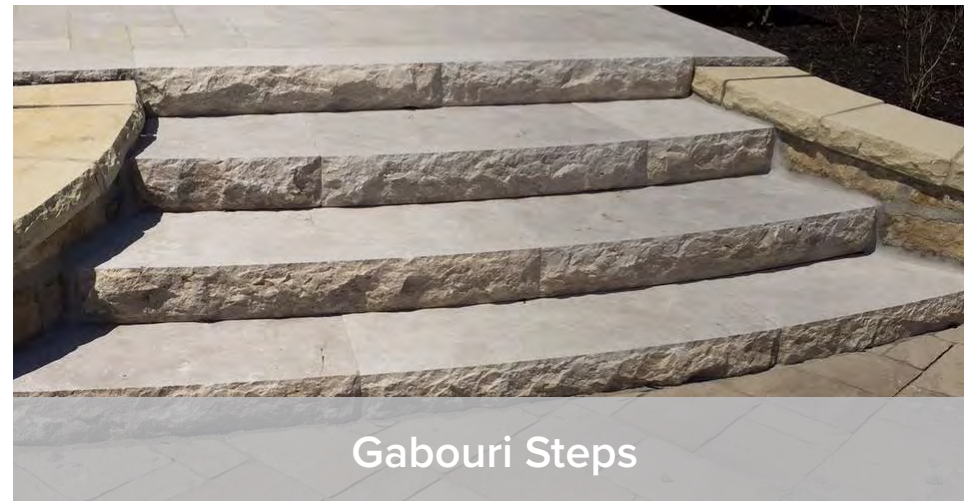
Gabouri Bench



Gabouri Old World



Gabouri Drywall



Gabouri Steps



**Gabouri**

Sawn Top and Bottom Tumbled or Snapped Edger





Gold and cream colors. EW Gold is typically used in split face veneer stone applications and in cut limestone applications due to its tight grain, high density, low absorption rate and gorgeous color which compliments many other materials. EW Gold appeals to both commercial and residential project designs of all sizes.



EW Gold Waterfall



EW Gold Flagstone



EW Gold Irregular Step



**EW Gold**

Sawn Top and Bottom Cobbled or Tumbled Edger



**EW Gold**  
Paver



**EW Gold**  
Ledge and Boulder



# PEWTER *mist*

by Earthworks

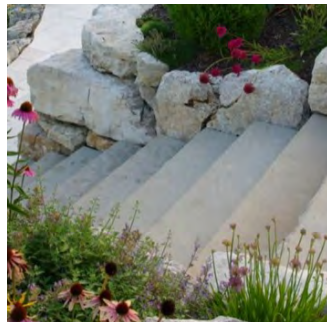
Light to dark gray colors. Pewter Mist is typically used in split face veneer stone applications and in cut limestone applications due to its tight grain, high density, low absorption rate and gorgeous color, which compliments many other materials. Pewter Mist appeals to both commercial and residential project designs of all specifications and sizes.



Pewter Mist 8" Drywall



Pewter Mist Natural Bed Edger



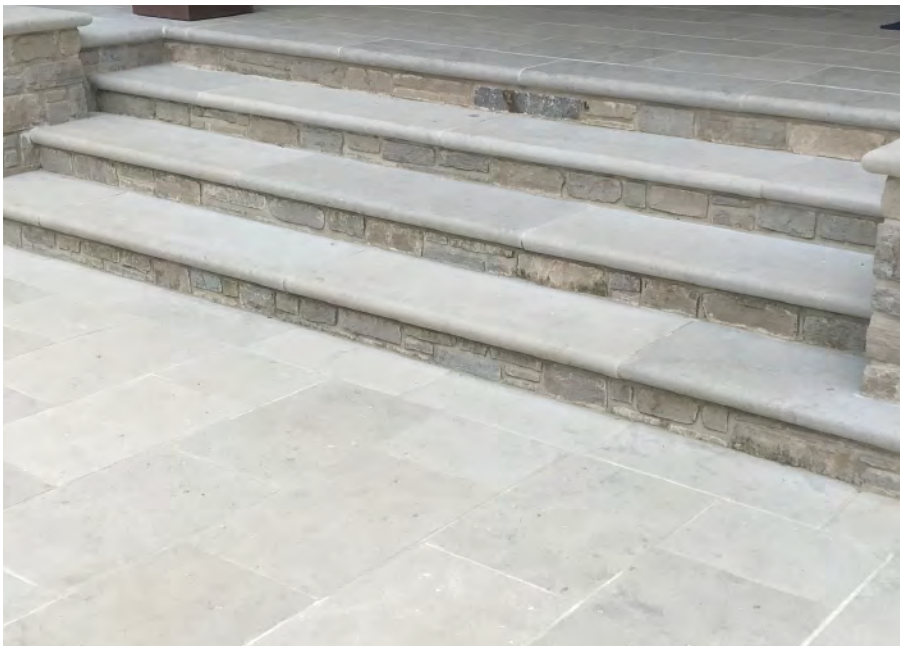
Pewter Mist  
Snapped Steps



Pewter Mist  
Sawn Top and Bottom Snapped Edger







PEWTER MIST

PRODUCT HIGHLIGHT

# MeridianRED

by Earthworks

This rare stone consists of light to deep reds, gold, buff, light green within the stone as well as on the beds of the stone. It is very suitable for many building stone applications as well as any landscape application.



Meridian Red Flagstone



Meridian Red Bench



Meridian Red Fireplace



Meridian Red Firepit

# Custom Paving Options



**Meridian Red**  
Sawn Top and Bottom Tumbled and Snapped Edger



**Meridian Red**  
Sandblasted



**Meridian Red**  
Honed



**Meridian Red**  
Boulders Ledgerrock



**Meridian Red**  
Tumbled Cobblers



**Meridian Red**  
Drywall



**Meridian Red**  
Gravel

# COBALT BLACK

by Earthworks

Quarried in Missouri, this granite consists of black and gray tones. Its tight grain, high density, low absorption rate and gorgeous color, Cobalt Black appeals to both commercial and residential project designs of all specifications and sizes.



Cobalt Black Granite  
Irregular Boulders



Cobalt Black Granite Cobblers



Cobalt Black Granite Gravel



**Cobalt Black**  
Sawn Top and Bottom Edger

## Custom Paving Options



**Cobalt Black Granite**  
Sandblasted



**Cobalt Black**  
Thermal



## Conception to Reality

Earthworks can help provide the materials to beautify your outdoor living spaces for both commercial and residential properties. Our experienced staff and design team can assist in making your dreams a reality.

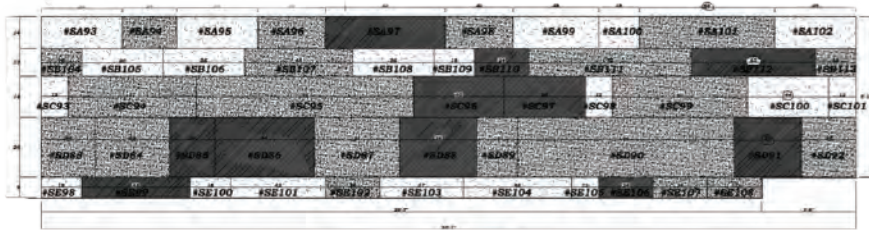
We have many products to choose from to suit the most discerning of tastes.

*Products include but are not limited to:*

- Boulders
- Cobblers
- Drywall
- Stone Edging
- Flagstone
- Outdoor living
- Steps
- Gravel
- Pavers
- Cleaners / Sealers
- EasyGrout



# CONCEPTION → REALITY



St Louis City Garden Set Print



St Louis City Garden



St. Louis City Garden Drawing



St Louis City Garden



**Adobe Buff**  
Ledgerrock



**Cobalt Black**  
Boulders



**Cobalt Black**  
Irregular Boulders



**Cobalt Black**  
Weathered Boulders



**EW Gold**  
Boulders



**EW Gold**  
Ledgerrock / Boulder



**Gabouri**



**Glacial Boulders**



**Meridan Red**  
Boulders / Ledgerrock



**Stonebridge Ledgerrock**



**Weathered Granite**  
Boulders



**Weathered Limestone**



**Weathered Limestone**  
Landscaping Stone



**Weathered Rhyolite**  
Boulders



**Weathered Sandstone**  
Boulders / Ledgerrock





Alabama Sunset  
Gravel



Cobalt Black  
Gravel



Crystal White Sparkle  
Gravel



Meramec "C"  
Gravel



Meridian Red  
Gravel



Red Lava  
Gravel



Shawnee 1"  
Gravel



Shawnee Pea  
Gravel



Snow Mountain Glacial  
Gravel



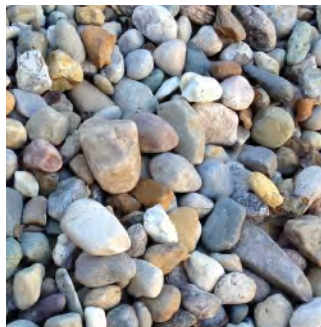
Trap Rock  
Gravel



Trap 1 3/4"  
Gravel



Trap Grit  
Gravel



Tulsa Rainbow  
Gravel

*\*More options may be available\**



Canadian  
Cobblers



Piney Creek  
Flats



Sandy Creek  
Cobblers



Squaw Valley  
Rainbow Cobblers



Squaw Valley  
Rainbow Flats



Squaw Valley  
Rainbow Skippers

*\*More options may be available\**



Cascade  
Cobblers



Cobalt Black  
Cobblers



EW Gold  
Tumbled Cobblers



Lakeview  
Cobblers



Meridian Red  
Tumbled Cobblers



Mexican Beach  
Pebbles



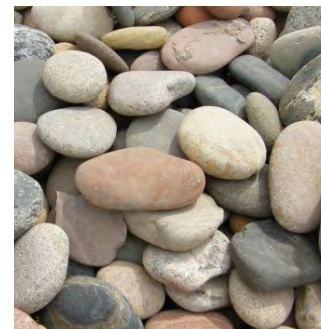
Piney Creek  
Skippers



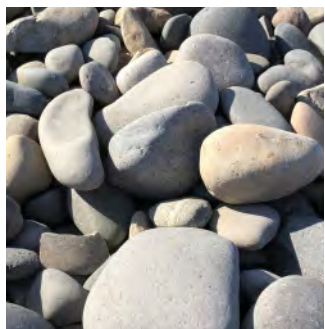
Ashland  
Cobblers



Squaw Valley  
Rainbow Mini Cobblers



Squaw Valley  
Rainbow Skippers



Silver Creek  
Cobblers



*\*More options may be available\**



Weathered Limestone Boulder



Weathered Rhyolite Boulder



EW Gold Drywall



Pewter Mist Drywall



Fossil Creek Flagstone & Steppers



Cumberland Mountain Flagstone



Weathered Sandstone Irregular Steps



Weathered Limestone Boulder



**Alpine**  
Snapped Edger



**Alpine**  
Tumbled Edger



**Cobalt Black**  
Sawn Top and Bottom Edger



**Eden**  
Snapped Edger



**Eden**  
Tumbled Edger



**EW Gold**  
Sawn Top and Bottom Snapped Edger



**EW Gold**  
Sawn Top and Bottom Tumbled Edger



**Meridian Red**  
Sawn Top and Bottom Snapped Edger



**Meridian Red**  
Sawn Top and Bottom Tumbled Edger



**Misty Gray**  
Tumbled Edger



**Pewter Mist**  
Snapped Edger



**Shawnee**  
Snapped Edger



**Shawnee**  
Tumbled Edger



**Handcut Cobblestone**  
Black  
(also available in white and red)



**EW Gold**  
Cobbled Edger



**Gabouri**  
Sawn Top and Bottom Edger  
(also available Tumbled)



**Hickory Star**  
Snapped Edger



**Indiana**  
Cobbled Edger



**Indiana**  
Sawn Top and Bottom Edger



**Kansas Cream**  
Cobbled Edger



**Old Street Cobblestone**



**Pewter Mist**



**Kansas Cream**  
Sawn Top and Bottom Edger



Alpine Steppers



Alpine Flagstone



Blue Fossil Flagstone



Blue Lavender Flagstone



Caramel Fossil Flagstone



Chilton Steppers



Chilton Flagstone



Cumberland Flagstone



Eden Steppers



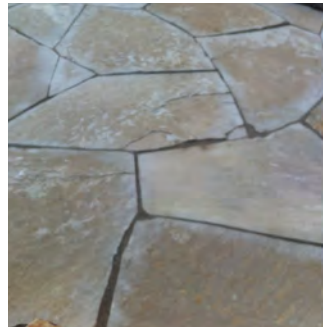
Eden Flagstone



Eden Premium Steppers



EW Gold Flagstone



Fossil Creek Flagstone



Gabouri Irregular Flagstone

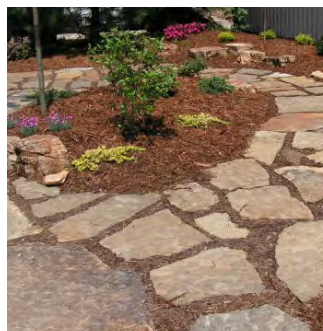


Golden Caramel Flagstone





**Golden Quartz**  
Flagstone



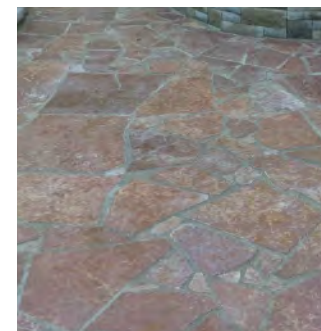
**Hickory Star**  
Flagstone & Steppers



**Hickory Star**  
Snapped Rects/Squares



**Hickory Star**  
Tumbled Rects/Squares



**Meridian Red**  
Flagstone



**Pennsylvania Bluestone**  
Irregular Flagstone



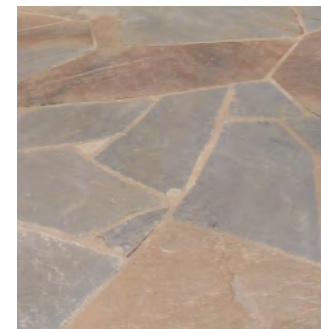
**Pewter Mist**  
Sawn Flagstone



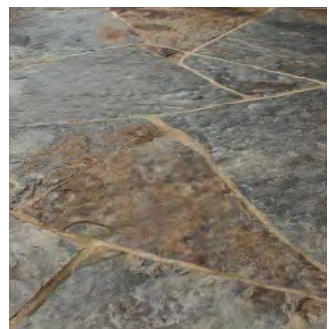
**Rocky Mountain Rose**  
Flagstone & Steppers



**Rustic Caramel**  
Flagstone



**Shadow Mountain**  
Flagstone



**Shawnee Blue/Brown**  
Flagstone & Steppers



**Shawnee Blue**  
Flagstone



**Van Gogh**  
Flagstone



**Thin Specialty Slabs**  
Available in 5 new Flagstones

*\*More options may be available\**



**Alpine**  
8" Drywall



**Blue Sandstone**  
8" Drywall



**Chilton**  
8" Drywall



**Eden**  
Random Drywall



**EW Gold**  
8" Drywall



**EW Gold**  
Old World 6" Tumbled Drywall



**EW Gold**  
Random Drywall



**Gabouri**  
8" Drywall



**Gabouri Old World**  
Random Drywall 3", 6", 9"



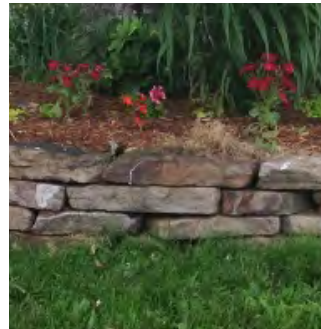
**Meridian Red**  
8" Drywall



**Pewter Mist**  
8" Drywall



**Shawnee**  
8" Drywall



**Weathered Fieldstone**  
Drywall



**Alpine**  
Snapped Steps



**Blue Sandstone**  
Snapped Steps



**Eden**  
Snapped Steps



**EW Gold**  
Irregular Steps



**Gabouri**  
Steps



**Gabouri**  
Snapped Steps



**Hickory Star**  
Steps



**Pewter Mist**  
Natural Bed Steps



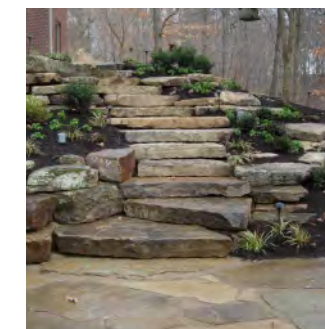
**Shawnee**  
Snapped Steps



**Shawnee**  
Irregular Steps



**Weathered Limestone**  
Irregular Steps



**Weathered Sandstone**  
Irregular Steps

*\*More options may be available\**



Outdoor Kitchens



Custom Made Stone Benches



Outdoor Stone Fireplaces



Custom Benches and Landscaping



Outdoor Living and Firepits



Outdoor Kitchens  
Shawnee steppers for countertop



Outdoor Stone Fireplaces  
Eden blend veneer



Custom Made Benches  
Variety of Stone Options

# FROM CONCEPTION TO REALITY

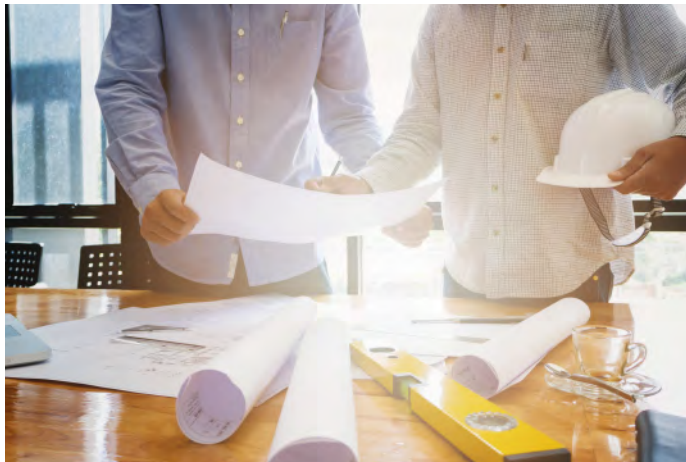
Let **EARTHWORKS** help you visualize your outdoor space

You're an artist. And we want you to build something epic with EarthWorks - but where do you begin? Sometimes, you already have a clear-cut vision for your project. Other times, you need a little inspiration. Whatever the case, we're here with options.

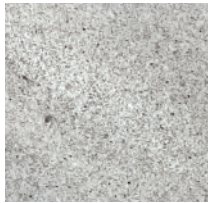
With our hands on approach, and our state-of-the-art machinery, fabrication capabilities and variety of stone options, we can produce the right stone for any project: commercial, or residential - which includes interior, exterior, and landscaping!

We work together to tailor-make your vision to your exact specifications, keeping you at the forefront of efficiency and innovation. We are with you every step of the way, from the beginning design phase, through shop drawings and production. Followed by a seamless hand off to the contractor, where we'll work on job take-offs, and job-specific scheduled delivery processes.

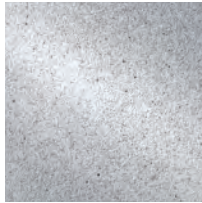
We believe in the power of partnership, and see the job from conception, to the last stone laid.



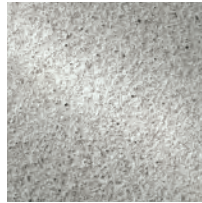
# Creating something custom is **EASY** with EarthWorks



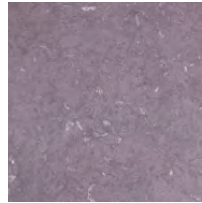
Bluff White Granite  
Honed



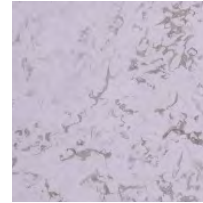
Bluff White Granite  
Sandblasted



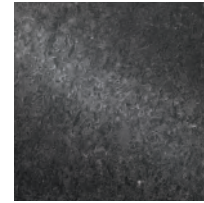
Bluff White Granite  
Thermal



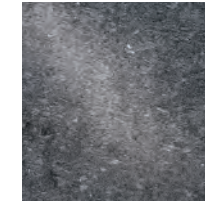
Chocolate Marble  
Honed



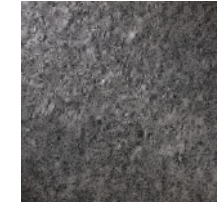
Chocolate Marble  
Sandblasted



Cobalt Black Granite  
Honed



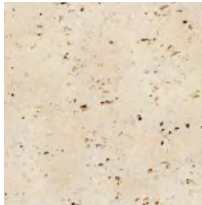
Cobalt Black Granite  
Sandblasted



Cobalt Black Granite  
Thermal



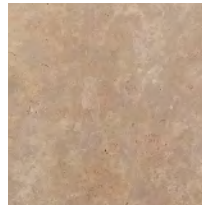
Cottonwood  
Bottom Ledge Honed



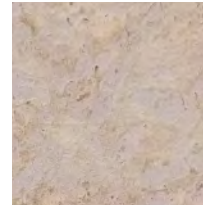
Cottonwood  
Top Ledge Honed



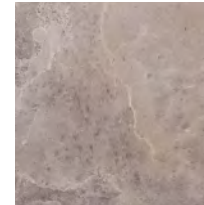
Cottonwood  
Sandblasted



EW Gold  
Honed



EW Gold  
Sandblasted



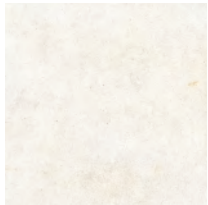
Gabouri  
Honed



Gabouri  
Sandblasted



Indiana Buff  
Sandblasted



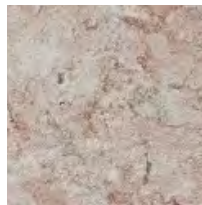
Lakeside Buff  
Honed



Lakeside Buff  
Sandblasted



Meridian Red  
Honed



Meridian Red  
Sandblasted



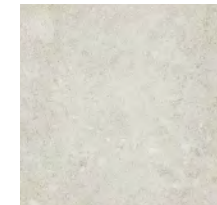
Missouri Rose Granite  
Honed



Missouri Rose Granite  
Sandblasted



Missouri Rose Granite  
Thermal



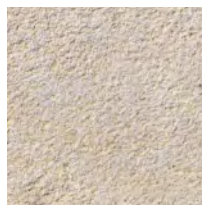
Pewter Mist Light/Medium  
Honed



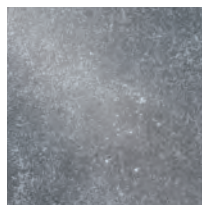
Pewter Mist Light/Medium  
Sandblasted



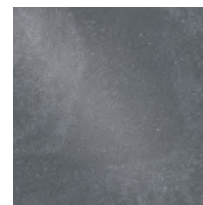
Silverdale  
Honed



Silverdale  
Sandblasted



Sky Mist Granite  
Honed



Sky Mist Granite  
Sandblasted



Sky Mist Granite  
Thermal



Sterling Gray  
Honed



Sterling Gray  
Sandblasted

**ANY SIZE, ANY PATTERN, ANY THICKNESS!**

*\*More options may be available\**



# REGENCY

## WALL SYSTEM



One of the most complementary and choice for stone walls and outdoor living spaces. Uniquely sized blocks make it easy to install in random patterns for a perfect finished look. The versatility of The Regency Wall System allows you to coordinate retaining and free-standing walls to create the perfect solution to any residential or commercial project.

### COMPONENTS

We have made every attempt to display realistic photos, however colors may vary due to the printing process. Final color selection should be made from actual product samples.

*Wall Unit*



10.5" x 12" x 24" - 48" Lengths  
 Split Face Front and Back Face  
 Sawn Top and Bottom Heights  
 One (1) Tapered End for Radius Wall Applications  
 One (1) End Split Square for 90 Degree Corner Unit

*Base Unit*



10.5" x 18" x 24" - 48" Lengths  
 Split Face Front and Back Face  
 Sawn Top and Bottom Heights  
 One (1) Tapered End for Radius Wall Applications  
 One (1) End Split Square for 90 Degree Corner Unit

*Wall Cap Unit*



36" x 14" x 5"  
 Split Face Front and Back Face  
 Sawn Top and Bottom Heights

*Step Unit*



See sales support for multiple step options

*Column Unit*



Column Cap 28" x 28" x 5"  
 Split Face Sides and Sawn Top  
 Also available Rockface (shown)  
 Column Base Unit 24" x 24" x 12"  
 Split Faced Four Sides  
 Sawn Top and Bottom



# THE BENEFITS

## ***Ease of Install:***

With fewer pieces, pinless design, and controlled heights and depths, The Regency Wall System reduces construction time and labor costs. Plus, the material used in The Regency Wall System reduces physical labor demands.

## ***Versatility:***

Uniquely sized in 10.5" x 12" random length blocks, creating the timeless beauty of a natural stone wall is easy to construct. The single or double sided blocks are sawn top and bottom and come in a color choice of our popular EW Gold, Gabouri or Pewter.



*EW Gold*



*Gabouri*



*Pewter Mist*

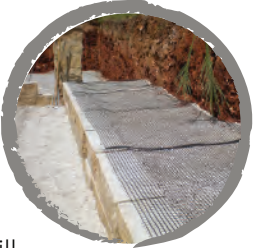


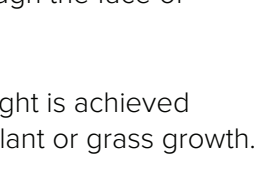
## ***Sustainability:***

Natural stone itself is a sustainable product. The genuine natural stone retaining wall system of The Regency Wall System is stronger and more durable than many man-made products. Ongoing environmental demands will not degrade the surface or wash out the color. The Regency Wall System is an eco-friendly way of developing your commercial site or beautifying your landscape with low impact to the environment.

## ***Strong and Durable:***

The Regency Wall System, with very similar construction practices as a segmental retaining wall system, is tough, long-lasting, and eco friendly. By utilizing a friction connection or a positive connection with geo-grid, practically any construction demand can be met.

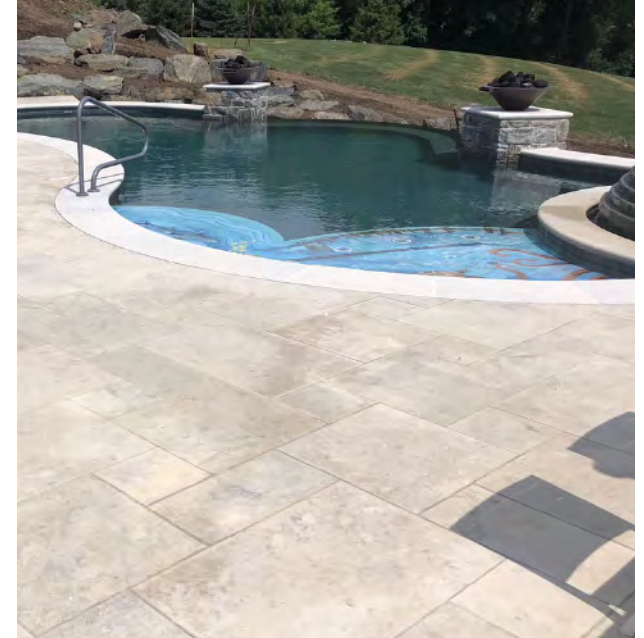
# Installation Guideline

- 1** A solid foundation is essential. Begin by excavating a trench approximately 24 inches along the length of the entire wall. Compact soil sub grade with a plate compactor. For walls taller than pre-engineered drawings please consult a qualified engineer for design information.
- 2** Once the desired compaction of the sub grade is complete, begin filling excavated area with base rock material in 2" to 4" lifts, compacting to specified density. Continue fill until base thickness is complete. (Usually a minimum of 6" compacted aggregate)
- 3** Install the first layer of blocks. Place base units the entire length of the wall facing outward. Position the blocks side by side, in full contact with the base and level in both directions. Be sure and properly level each and every unit from front to back and side to side. Once the base level is properly installed, back fill the units with a clean free-draining aggregate a minimum of 12" in bed depth (typically 1" clean limestone).
- 4** Adding additional layers. Continue stacking walls units by positioning blocks in a staggered relationship to the row beneath in a running bond like pattern. The units can be stacked vertical or offset (typically 1") to create a batter to the wall.
- 5** Drainage and backfill. Place a drain tile behind the wall to allow for drainage. Outlet the drain tile through the face of the wall every 75' and at the ends.
- 6** Finish the installation. Once the desired height is achieved fill the remaining 6" of backfill with soil for plant or grass growth.



*It's easy!*

- 1 Upload a photo of your project or your plans.
- 2 Map out the various elements with our built-in tracing tools.
- 3 Visualize numerous combinations.
- 4 Create your dream and save it for future needs.



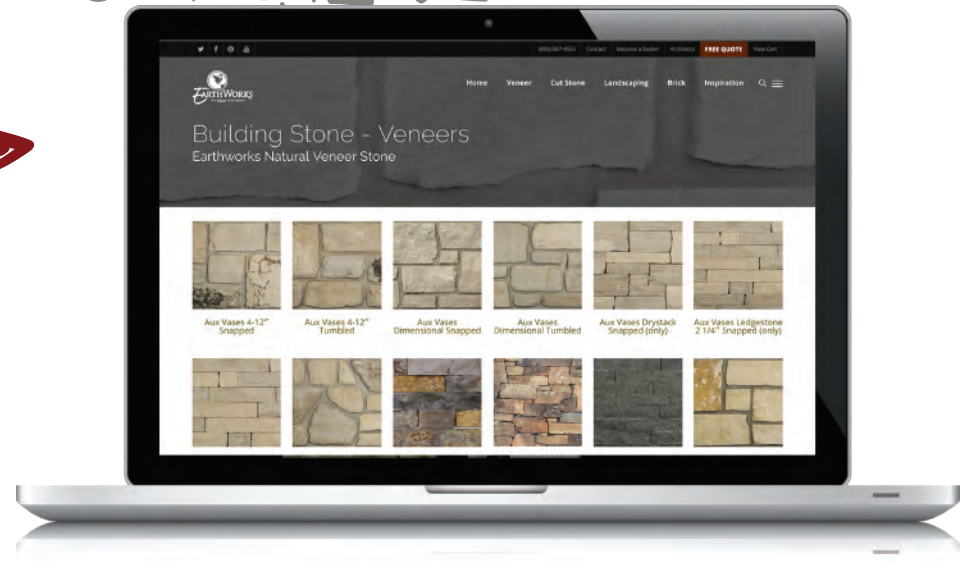
Visit our site today to take the first steps towards  
**building something epic.**



# CHECK OUT OUR UPDATED WEBSITE

*visit us online!*

- ✓ Brand new & cutting edge
- ✓ Easy to navigate
- ✓ Inspiration photos & videos
- ✓ Free quotes
- ✓ Request samples
- ✓ Updated regularly



# AND OUR SMART PHONE APP



Visit the APP STORE or GOOGLE PLAY STORE and search for "EarthWorks".

- ✓ View all of our natural stone collections
- ✓ Watch our incredible project videos
- ✓ Connect with us on social media
- ✓ Call us directly from the app
- ✓ Updated regularly with products & videos



*Download Now!*



WEBSITE AND APP

# What Is EasyGrout & How Can I Install It?

EasyGrout is EarthWorks' revolutionary high-performance grout product for paving solutions. EasyGrout can be used in both wet and dry conditions, taking only a fraction of the time of conventional grouting! EasyGrout is swept gently into the joints of paving slabs and pre-mixed, meaning no extra equipment is required. A considerable life-saver to a frost and weed resistant finish, EasyGrout is your go-to product for reliability, ease of use, and long-lasting performance. EasyGrout gets it done rain or shine.

**How to install this epic solution? It's simple with these six steps!**



## STEP 1:

Soak the paving with a hose and keep wet throughout to avoid temporary staining.



## STEP 2:

Open your tub and sealed bag.



## STEP 3:

Pour your EasyGrout material onto the paving.



**STEP 4:**

Brush the material into the joints while ensuring the joint voids are completely full.



**STEP 5:**

Carefully brush off any excess. Particles left on the paving can leave a speckled finish.



**STEP 6:**

Using a pointing iron, strike off the joints. Refill any gaps with the EasyGrout.



Earthworks' EasyGrout comes in a selection of three colors equipped for a variety of different dimensions.

For more information, contact Earthworks Natural Stone, and ask about our full line of paving cleaner and sealer products.

Coverage Per 33 lb Tub	
Paving size in inches	Coverage in square feet
24 x 24	97 - 105
18 x 24	78 - 86
18 x 18	67 - 73
12 x 24	62 - 67
12 x 18	57 - 62
9 x 18	46 - 51
12 x 12	46 - 51
9 x 9	35 - 40



COVERAGE CHART

sandstone 4" = 40 face sq ft per ton  
 sandstone 8" = 20 sq ft per ton  
 sandstone irregular = 15 sq ft per ton  
 limestone 4" = 40 sq ft per ton  
 limestone 8" = 20 sq ft per ton  
 limestone 12" = 12 sq ft per ton  
 limestone irregular = 15 sq ft per ton  
 lime/sand mosaic 3.5" bed = 40 sq ft per ton

SEALER COVERAGE

patio seal porous + patio seal porous plus  
 sandstone = 60-85 sq ft per liter  
 limestone = 85-100 sq ft per liter  
 block pavers = 50-85 sq ft per liter  
 stone seal gold  
 porous stone = 65 sq ft per liter  
 dense limestone + slate = 85-100 sq ft per liter  
 flamed granite = 100-130 sq ft per liter

MATERIAL WEIGHT (LBS PER CU YD)

concrete wet = 3730 lbs  
 clay dry = 2300 lbs  
 top soil loose = 2050 lbs  
 limestone crushed = 2700 lbs 3/4"  
 decorative gravel = 2800 lbs  
 sand dry = 2750 lbs  
 sand wet = 3300 lbs  
 water = 1700 lbs / per yd

PRE MIX MORTAR FOR STONE

adhering stone veneer - 25 sq ft per bag  
 jointing stone veneer - 25 sq ft per bag  
 adhering & jointing - 13 sq ft per bag  
 metal lath = 2'4"x8' - 18 sq ft per piece  
 scratch coat = 2'4"x8' - 18 sq ft per bag  
 natural stone 4" depth - 7 sq ft per bag

CLEANER COVERAGE

algerase 1:5 water = 387 sq ft / liter  
 biorase (depends on ratio) = 40-85 sq ft / liter  
 powerase sandstone = 65-85 sq ft / liter  
 powerase limestone = 85-100 sq ft / liter  
 powerase block/pavers = 50-85 sq ft / liter  
 builderase (depends on ratio) = 100-500 sq ft / liter

EASYGROUT

coverage per 33lb tub  
 joints at 3/4" deep x 3/8" wide  
 24x24 = 97-105 sq ft per tub  
 12x24 = 62-67 sq ft per tub  
 12x12 = 46-51 sq ft per tub  
 for 1 1/2" deep joints ÷ 2

FLAGSTONE COVERAGE

3/4-1" = 140 sq ft per ton  
 1"- 1 1/4" = 120 sq ft per ton  
 1 1/4"- 1 1/2" = 100 sq ft per ton  
 1 1/2" - 2" = 85 sq ft per ton  
 2 - 3" = 60 sq ft per ton  
 note: coverage depends on density of stone

CIRCLES

radius = 1/2 distance of circle  
 diameter = distance across center of circle  
 circumference = distance around a circle  
 pi = 3.14  
 diameter x 3.14 = circumference  
 radius x 2 x 3.14 = sq ft of circle

LIQUID MEASUREMENTS

1 tbsp = 1/2 oz = 3 tsp  
 1 cup = 8 oz = 1/2 pint  
 4 cups = 2 pints = 1 quart  
 4 quarts = 128 oz = 1 gallon  
 1 liter = 33.82 oz = 1.057 quart  
 4.228 liters = 128 oz = 1 gal

BRICK SIZES

modular - 2 1/4" h x 7 5/8" l x 3 5/8" d = 6.8 brick / sq ft  
 king - 2 5/8" h x 9 1/2" l x 2 3/4" d = 4.8 brick / sq ft  
 queen - 2 3/4" h x 7 5/8" l x 2 7/8" d = 5.6 brick / sq ft  
 closure - 3 5/8" h x 7 5/8" l x 3 5/8" d = 4.5 brick / sq ft  
 other options available

PRE MIX MORTAR FOR BRICK

modular = 40 per bag  
 queen = 35 per bag  
 king = 31 per bag  
 closure = 30 per bag

CUBIC MEASUREMENTS

sq inches x .007 = sq ft  
 sq ft x .111 = sq yd  
 1,728 cu in = 1 cu ft  
 27 cu ft = 1 cu yd  
 cu in x .0058 = cu ft

AREA MEASUREMENTS

144 sq in = 1 sq ft  
 9 sq ft = 1 sq yd  
 1 acre = 4,840 sq yds  
 1 acre = 43,560 sq ft  
 640 acres = 1 sq mile

LINEAR MEASUREMENTS

12in = 1 foot  
 3 feet = 1 yard  
 1,760 yards = 1 mile  
 1 mile = 5,280 feet

BOULDER / LEDGE WALLS

sandstone = 140-165 lbs / cu ft / 6-7 face sq ft / ton  
 limestone = 150-170 lbs / cu ft / 5-6 face sq ft / ton  
 granite = 180-200 lbs / cu ft / 4-5 face sq ft / ton

AREA OF SQUARE

sq ft = length x width  
 cu ft = length x width x height

WEIGHT

16 oz = 1 lb  
 2000 lbs = 1 ton

**BUILD  
SOMETHING  
EPIC.**



[earthworksstone.com](http://earthworksstone.com)



EarthWorks

**Chesterfield**

16900-A Baxter Road / Chesterfield, MO 63005  
Phone: 636.532.0713 / Toll Free: 800.532.9510

**Perryville**

4287 N. Hwy 51 / Perryville, MO 63775  
Phone: 573.547.9097 / Toll Free: 800.887.4555